

# Alkalinity Test Kit

1 drop = 23 gpg as  $\text{CaCO}_3$  / 5 mL

**TK1045-Z**  
red caps

## KIT COMPONENTS:

SA1519-B	Sulfuric Acid 1.1N, 60 mL
AI6925-A	Total Alkalinity Indicator, 30 mL
SY-2012-P	Syringe, 12 mL
VL-0525-V	Vial, 5-25 mL

## SAFETY TIPS:



Wear  
Gloves



Use Eye  
Protection



Read  
SDS

## TESTING TIPS:



Collect  
Accurate  
Sample



Hold  
Bottles  
Vertically

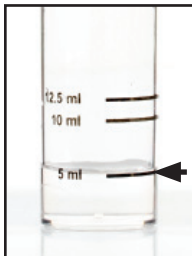


Ensure  
Proper  
Lighting

**INTERFERENCES:** Turbid or highly colored samples may mask the color change at the endpoint.

**ATTENTION:** As necessary, calibrate this kit against a known standard made with plant / make-up water. Be sure to collect a representative sample.

**1** Rinse vial three times with sample to be tested. **Fill vial to 5 mL.**



STEP 1

**2** Add 3 drops of **Total Alkalinity Indicator (AI6925)** and swirl to mix. The sample should turn green.



STEP 2

**3** Add **Sulfuric Acid 1.1N** (SA1519) one drop at a time while swirling. Count the number of drops until the sample color turns from green to red.

# of drops x 23 = gpg as  $\text{CaCO}_3$   
# of drops x 385 = ppm as  $\text{CaCO}_3$



STEP 3