

# Caustic Test Kit

**TK3000-Z**  
blue caps

## KIT COMPONENTS:

|           |                                  |
|-----------|----------------------------------|
| HA6207-B  | Hydrochloric Acid 7.7N, 60 mL    |
| PH1605-A  | Phenolphthalein Indicator, 30 mL |
| SY-2012-P | Syringe, 12 mL                   |
| VL-0525-V | Vial, 5-25 mL                    |

**INTERFERENCES:** Turbid or highly colored samples may mask the color change at the endpoint.

## DILUTION INSTRUCTIONS:

1 mL sample (1 mL of sample and 9 mL of water)  
1 drop = 1.0% Caustic as NaOH  
1 drop = 1.4% Caustic as KOH

5 mL sample (5 mL of sample and 5 mL of water)  
1 drop = 0.2% Caustic as NaOH  
1 drop = 0.28% Caustic as KOH

## SAFETY TIPS:



Wear  
Gloves



Use Eye  
Protection



Read  
SDS

## TESTING TIPS:



Collect  
Accurate  
Sample



Hold  
Bottles  
Vertically



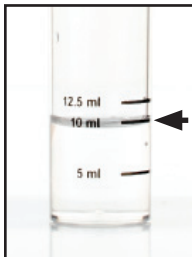
Ensure  
Proper  
Lighting

**ATTENTION:** As necessary, calibrate this kit against a known standard made with plant / make-up water. Be sure to collect a representative sample.

Video Procedure



**1** Rinse vial three times with sample to be tested. **Fill vial to 10 mL.**



STEP 1

**2** Add 3 drops of **Phenolphthalein Indicator** (PH1605) and swirl to mix. The sample should turn red.

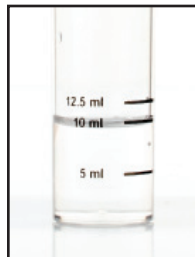


STEP 2

**3** Add **Hydrochloric Acid 7.7N** (HA6207) one drop at a time while swirling. Count the number of drops until the sample returns to its original color.

1 drop = 0.1% Caustic as NaOH

1 drop = 0.14% Caustic as KOH



STEP 3