

# Caustic Test Kit

**TK3001-Z**  
blue caps

## KIT COMPONENTS:

SA1705-B	Sulfuric Acid 15.4N, 60 mL
PH1605-A	Phenolphthalein Indicator, 30 mL
SY-2012-P	Syringe, 12 mL
VL-0525-V	Vial, 5-25 mL

## SAFETY TIPS:



Wear  
Gloves



Use Eye  
Protection



Read  
SDS

## TESTING TIPS:



Collect  
Accurate  
Sample



Hold  
Bottles  
Vertically



Ensure  
Proper  
Lighting

**INTERFERENCES:** Turbid or highly colored samples may mask the color change at the endpoint.

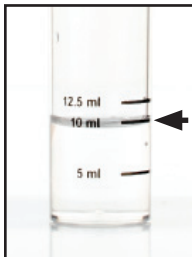
**ATTENTION:** As necessary, calibrate this kit against a known standard made with plant / make-up water. Be sure to collect a representative sample.



Video Procedure



**1** Rinse vial three times with sample to be tested. **Fill vial to 10 mL.**



STEP 1

**2** Add 3 drops of **Phenolphthalein Indicator** (PH1605) and swirl to mix. The sample should turn red.

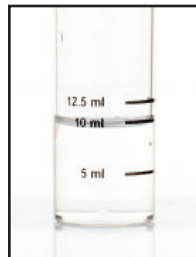


STEP 2

**3** Add **Sulfuric Acid 15.4N** (SA1705) one drop at a time while swirling. Count the number of drops until the sample returns to its original color.

1 drop = 0.2% Caustic as NaOH

1 drop = 0.28% Caustic as KOH



STEP 3