

# Caustic Test Kit

**TK3006-Z**  
blue caps

## KIT COMPONENTS:

SA1659-B	Sulfuric Acid 4.5N, 60 mL
PH1605-A	Phenolphthalein Indicator, 30 mL
SY-2012-P	Syringe, 12 mL
VL-0525-V	Vial, 5-25 mL

## SAFETY TIPS:



Wear  
Gloves



Use Eye  
Protection



Read  
SDS

## TESTING TIPS:



Collect  
Accurate  
Sample



Hold  
Bottles  
Vertically

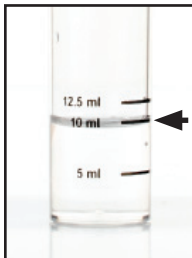


Ensure  
Proper  
Lighting

**INTERFERENCES:** Turbid or highly colored samples may mask the color change at the endpoint.

**ATTENTION:** As necessary, calibrate this kit against a known standard made with plant / make-up water. Be sure to collect a representative sample.

**1** Rinse vial three times with sample to be tested. **Fill vial to 10 mL.**



STEP 1

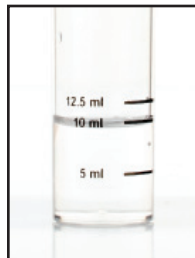
**2** Add 3 drops of **Phenolphthalein Indicator** (PH1605) and swirl to mix. The sample should turn red.



STEP 2

**3** Add **Sulfuric Acid 4.5N** (SA1659) one drop at a time while swirling. Count the number of drops until the sample returns to its original color.

# drops x Factor = % Caustic



STEP 3