

Chelant (Total) Test Kit

1 drop = 2 ppm Total Chelant as EDTA / 20 mL

TK3090-Z

white caps

KIT COMPONENTS:

TC1050-H	Total Chelant Indicator Powder, 10 g
HA6310-B	Hydrochloric Acid 10%, 60 mL
BN6891-B	Bismuth Nitrate 0.005M, 60 mL
VL-1005-V	Vial, 10-50 mL

SAFETY TIPS:



Wear
Gloves



Use Eye
Protection



Read
SDS

TESTING TIPS:



Collect
Accurate
Sample



Hold
Bottles
Vertically



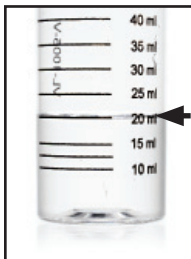
Ensure
Proper
Lighting

INTERFERENCES: None Known

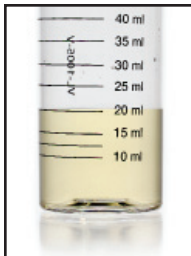
ATTENTION: As necessary, calibrate this kit against a known standard made with plant / make-up water. Be sure to collect a representative sample.



1 Rinse vial three times with sample to be tested. **Fill vial to 20 mL.**

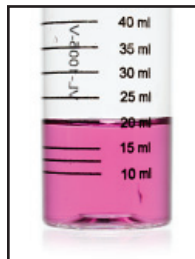
**STEP 1**

2 Add 1 scoop of **Total Chelant Indicator Powder** (TC1050) and swirl to mix.

**STEP 3**

3 If the sample turns yellow **add 2 drops of Hydrochloric Acid 10%** (HA6310).

If the sample turns blue **add Hydrochloric Acid 10%** (HA6310) one drop at a time while swirling until the sample just turns yellow. Then add 2 more drops.

**STEP 4**

4 Add **Bismuth Nitrate 0.005M** (BN6891) one drop at a time while swirling. Count the number of drops until the solution just turns a pink color.

drops x 2 = ppm Total Chelant as EDTA