

# Alkaline Test Kit

**TK5002-Z**  
yellow caps

## KIT COMPONENTS:

PH1605-A	Phenolphthalein Indicator, 30 mL
SA7550-B	Sulfuric Acid 0.1N, 60 mL
VL-0525-V	Vial, 5-25 mL

## SAFETY TIPS:



Wear  
Gloves



Use Eye  
Protection



Read  
SDS

## TESTING TIPS:



Collect  
Accurate  
Sample



Hold  
Bottles  
Vertically



Ensure  
Proper  
Lighting

**INTERFERENCES:** Turbid samples may mask the color change at the endpoint.

**ATTENTION:** As necessary, calibrate this kit against a known standard made with plant / make-up water. Be sure to collect a representative sample.

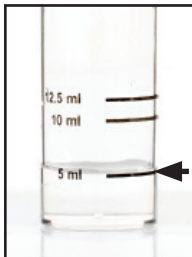
## GENERIC FACTOR:

# drops x 33 = ppm Alkalinity as NaOH

Video Procedure



**1** Rinse vial three times with sample to be tested. **Fill vial to 5 mL.**



STEP 1

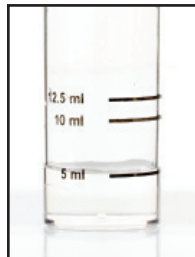
**2** Add 3 drops of **Phenolphthalein Indicator** (PH1605) and swirl to mix. The sample should turn pink.



STEP 2

**3** Add **Sulfuric Acid 0.1N** (SA7550) one drop at a time while swirling. Count the number of drops until the sample color changes from pink to clear.

# drops x factor = amount of product



STEP 3