

Chlorinated Alkalinity Test Kit

TK5020-Z
yellow caps

KIT COMPONENTS:

PH1605-A	Phenolphthalein Indicator, 30 mL
ST2970-B	Sodium Thiosulfate, 60 mL
SA1688-A	Sulfuric Acid 10.0N, 30 mL
SY-2012-P	Syringe, 12 mL
VL-0525-V	Vial, 5-25 mL

SAFETY TIPS:



Wear
Gloves



Use Eye
Protection



Read
SDS

TESTING TIPS:



Collect
Accurate
Sample



Hold
Bottles
Vertically



Ensure
Proper
Lighting

INTERFERENCES (Chlorinated Alkalinity): Turbid samples may mask the color change at the endpoint. High levels of Chlorine may cause negative interference.

ATTENTION: As necessary, calibrate this kit against a known standard made with plant / make-up water. Be sure to collect a representative sample.

GENERIC FACTOR:

drops x 1600 = ppm as NaOH

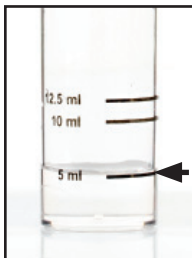
Video Procedure



1 Rinse vial three times with sample to be tested. **Fill vial to 5 mL.**

2 Add 3 drops of **Phenolphthalein Indicator** (PH1605) and swirl to mix. The sample should turn pink.

2a) If sample does not turn pink, add 5 drops of Sodium Thiosulfate (ST2970). Add an additional 3 drops of Phenolphthalein Indicator and the sample should turn pink. If it does not, repeat step 2a one more time. If sample still does not turn pink, chemical level may be too low.



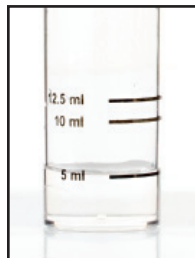
STEP 1



STEP 2

3 Add **Sulfuric Acid 10.0N** (SA1688) one drop at a time while swirling. Count the number of drops until the sample color changes from pink to clear.

drops x factor = amount of product



STEP 3