

Water Buffer Test Kit

1 drop = 40 ppm Buffers / 10 mL

TK5040-Z

yellow caps

KIT COMPONENTS:

SA7550-B	Sulfuric Acid 0.1N, 60 mL
BB4880-B	Bromphenol Blue Indicator, 60 mL
SY-2012-P	Syringe, 12 mL
VL-1005-V	Vial, 10-50 mL

SAFETY TIPS:



Wear
Gloves



Use Eye
Protection



Read
SDS

TESTING TIPS:



Collect
Accurate
Sample



Hold
Bottles
Vertically

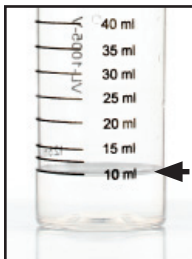


Ensure
Proper
Lighting

INTERFERENCES: None Known

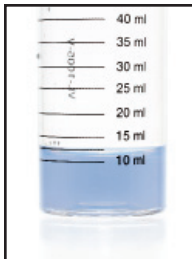
ATTENTION: As necessary, calibrate this kit against a known standard made with plant / make-up water. Be sure to collect a representative sample.

1 Rinse vial three times with sample to be tested. **Fill vial to 10 mL.**



STEP 1

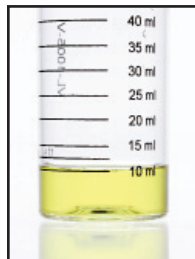
2 Add 3 drops of **Bromphenol Blue Indicator (BB4880)** and swirl to mix. The sample should turn a bluish color.



STEP 2

3 Add **Sulfuric Acid 0.1N** (SA7550), one drop at a time while swirling, until the color turns from blue to clear yellow. Record the number of drops.

drops x 40 = ppm buffers



STEP 3