

# Iodine Test Kit

**TK6000-Z**  
white caps

## KIT COMPONENTS:

SA7740-A	Sulfuric Acid 50%, 30 mL
ST7710-B	Starch Indicator Solution 1%, 60 mL
ST2700-B	Sodium Thiosulfate 0.00387N, 60 mL
SY-2012-P	Syringe, 12 mL
VL-1005-V	Vial, 10-50 mL

**INTERFERENCES:** All oxidizable substances such as Organic Matter, Sulfides and Nitrites, are positive interferences. Metals, namely Copper, can stop or slow the chemical reaction.

## SAFETY TIPS:



Wear  
Gloves



Use Eye  
Protection



Read  
SDS

## TESTING TIPS:



Collect  
Accurate  
Sample



Hold  
Bottles  
Vertically



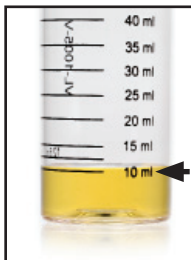
Ensure  
Proper  
Lighting

**ATTENTION:** As necessary, calibrate this kit against a known standard made with plant / make-up water. Be sure to collect a representative sample.

Video Procedure

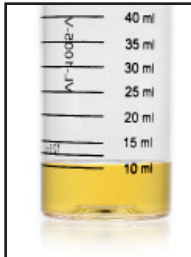


**1** Rinse vial three times with sample to be tested. **Fill vial to 10 mL** with sample.



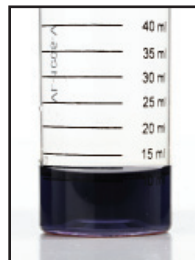
STEP 1

**2** Add **3 drops of Sulfuric Acid 50%** (SA7740) and swirl to mix.



STEP 2

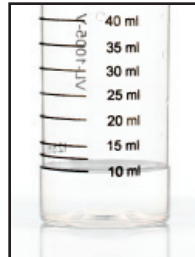
**3** Add **5 drops of Starch Indicator Solution 1%** (ST7710) and swirl to mix. Sample should turn brown to dark blue if Iodine is present.



STEP 3

**4** Add **Sodium Thiosulfate 0.00387N** (ST2700) one drop at a time while swirling. Count the number of drops until the sample returns to clear or original color.

# of drops x 2 = ppm as Iodine



STEP 4