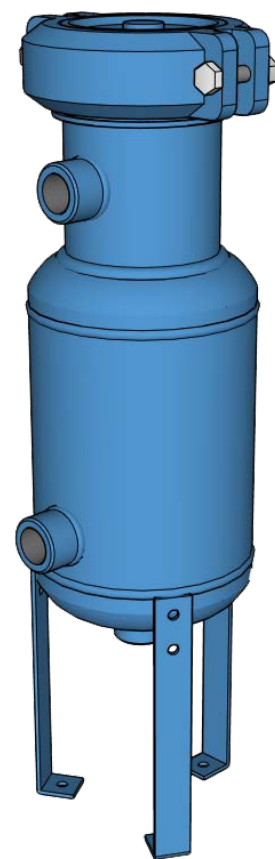
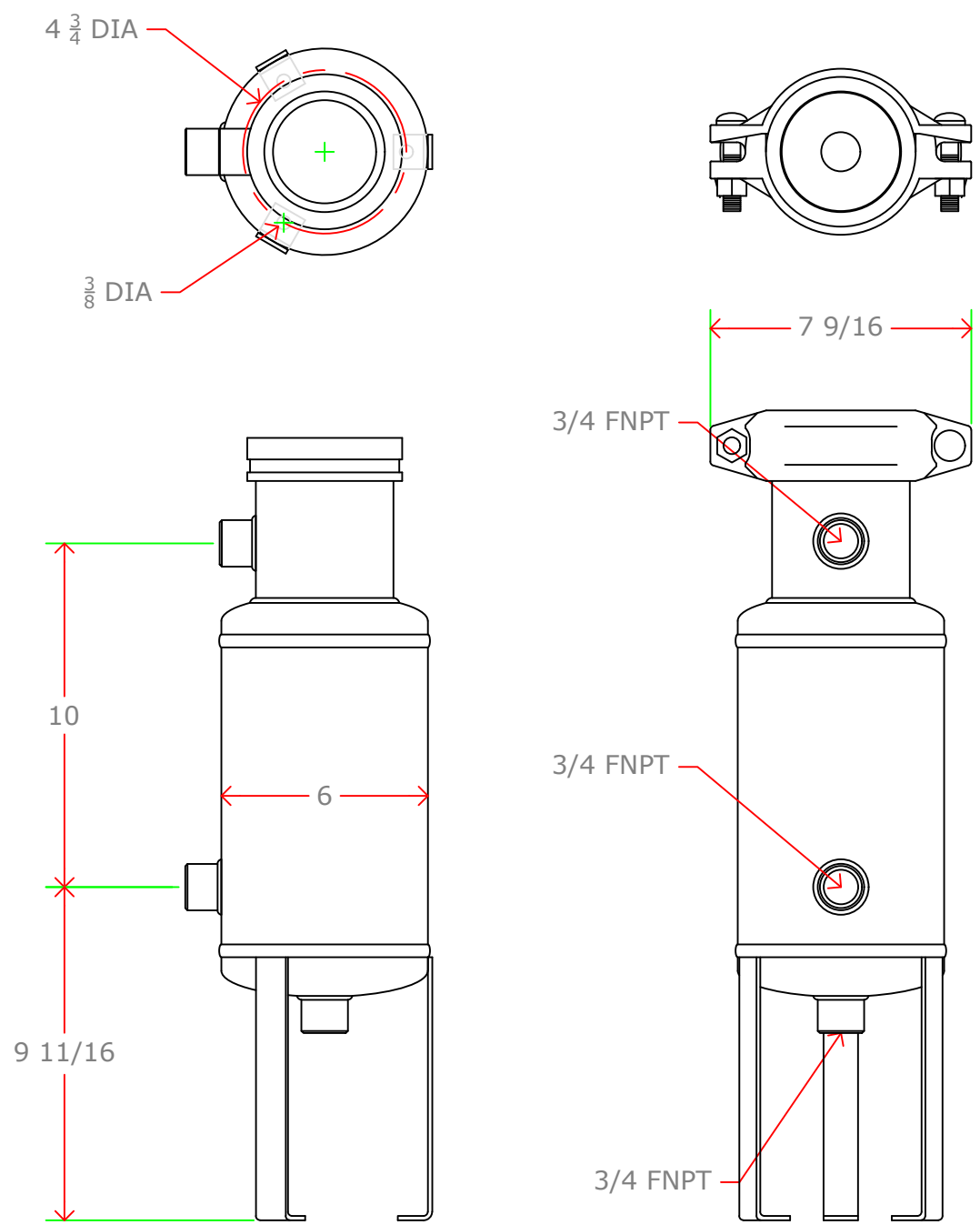


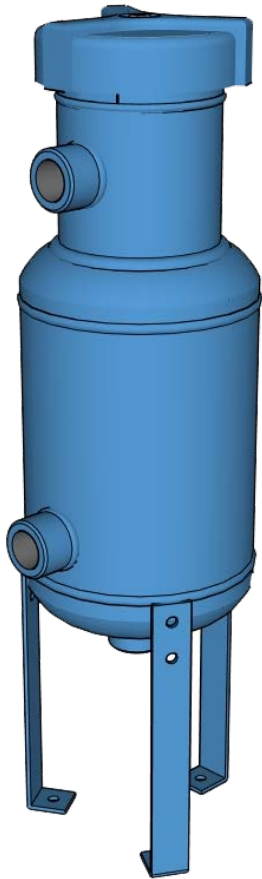
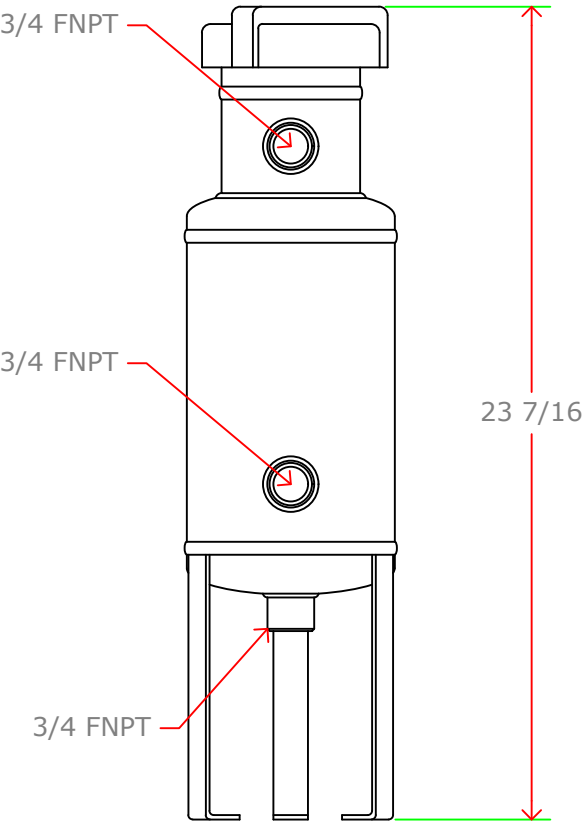
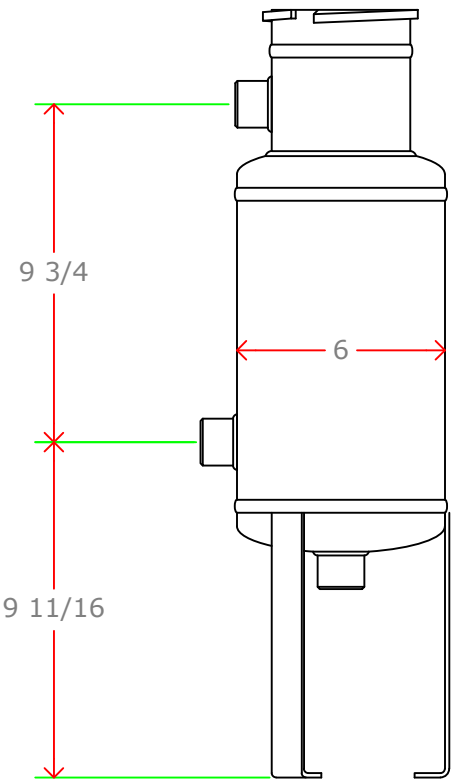
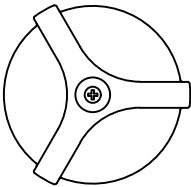
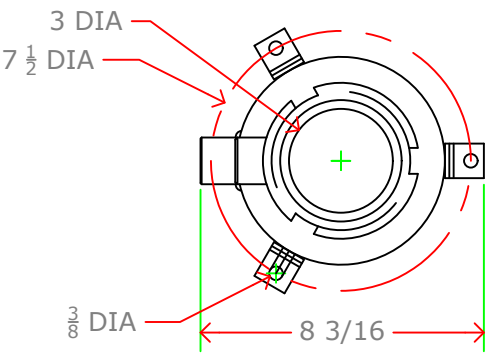
NOTICE: This drawing and it's contents are for the specific use of APS customers only. It is not to be duplicated or copied without expressed written consent. AquaPhoenix reserves the right to modify this drawing without notice.



MATERIALS OF CONSTRUCTION:									
CARBON STEEL, BUNA-N									
Capacity:	1	Gallons							
Max Temp.:	200	F							
Max Press.:	300	PSI							
Weight:	16	Lbs.							
Voltage.:	x	VAC	x	Phs	x	Hz			
FLA.:	x	amps							
AquaPhoenix Scientific, Inc. California Division									
113 Viking Ave, Brea CA 92821									
Phone: 714-257-9165				http://www.aquaphoenixsci.com					
Fax: 714-257-9215				info@aquaphoenixsci.com					
Date:	02/01/06	Scale:	NTS	Rev.:	A				
Description:									
BYPASS/FILTER FEEDER									
Model:									
DB1									

NOTICE: This drawing and it's contents are for the specific use of APS customers only. It is not to be duplicated or copied without expressed written consent. AquaPhoenix reserves the right to modify this drawing without notice.

NOTICE: This drawing and it's contents are for the specific use of APS customers only. It is not to be duplicated or copied without expressed written consent. AquaPhoenix reserves the right to modify this drawing without notice.

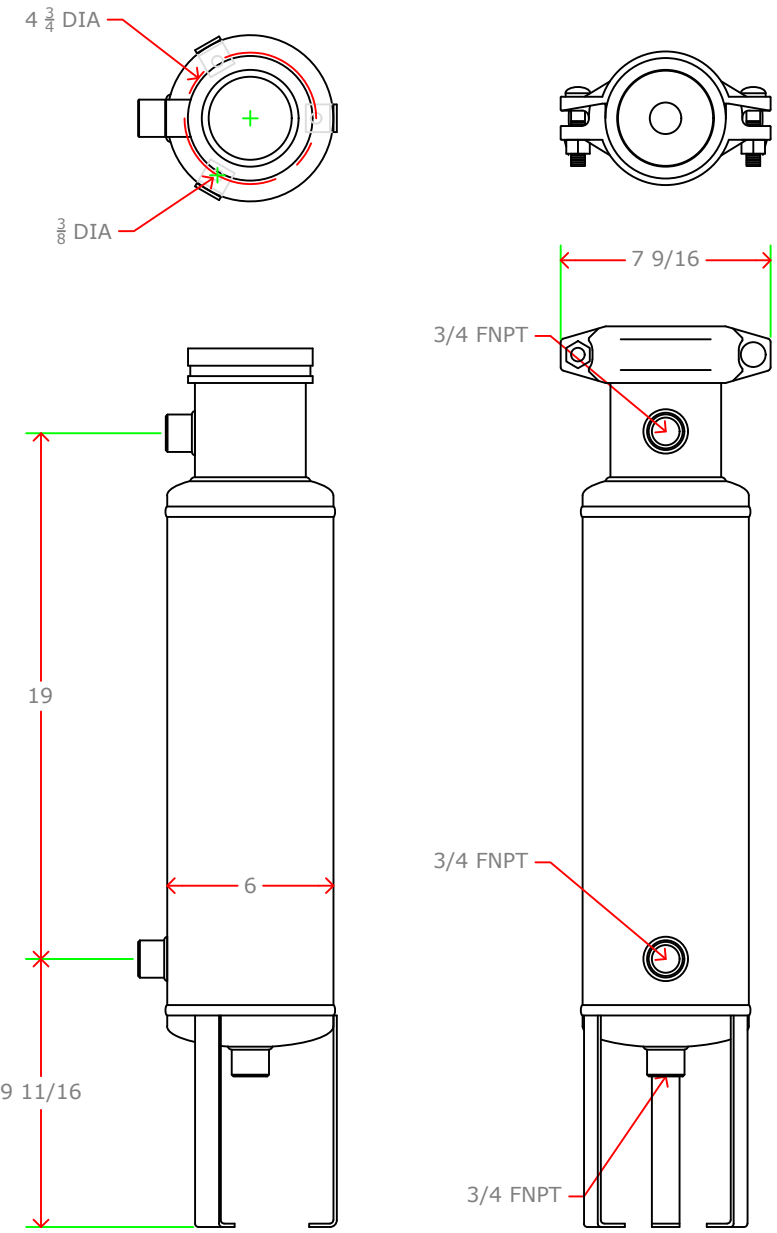


MATERIALS OF CONSTRUCTION:
CARBON STEEL, BUNA-N, RYTON

Capacity:	1	Gallons
Max Temp.:	200	F
Max Press.:	300	PSI
Weight:	16	Lbs.
Voltage.:	x	VAC x Phs x Hz
FLA.:	x	amps
AquaPhoenix Scientific, Inc. California Division 113 Viking Ave, Brea CA 92821 Phone: 714-257-9165 http://www.aquaphoenixsci.com Fax: 714-257-9215 info@aquaphoenixsci.com		
Date:	02/01/06	Scale: NTS Rev.: A
Description:	BYPASS/FILTER FEEDER	
Model:	DB1/QC	

NOTICE: This drawing and it's contents are for the specific use of APS customers only. It is not to be duplicated or copied without expressed written consent. AquaPhoenix reserves the right to modify this drawing without notice.

NOTICE: This drawing and it's contents are for the specific use of APS customers only. It is not to be duplicated or copied without expressed written consent. AquaPhoenix reserves the right to modify this drawing without notice.

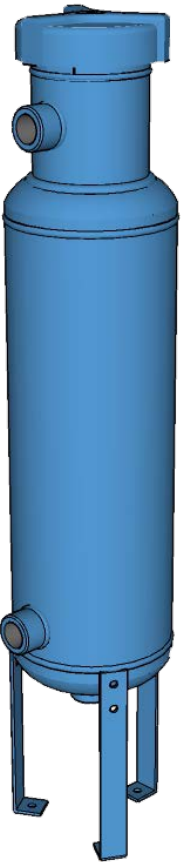
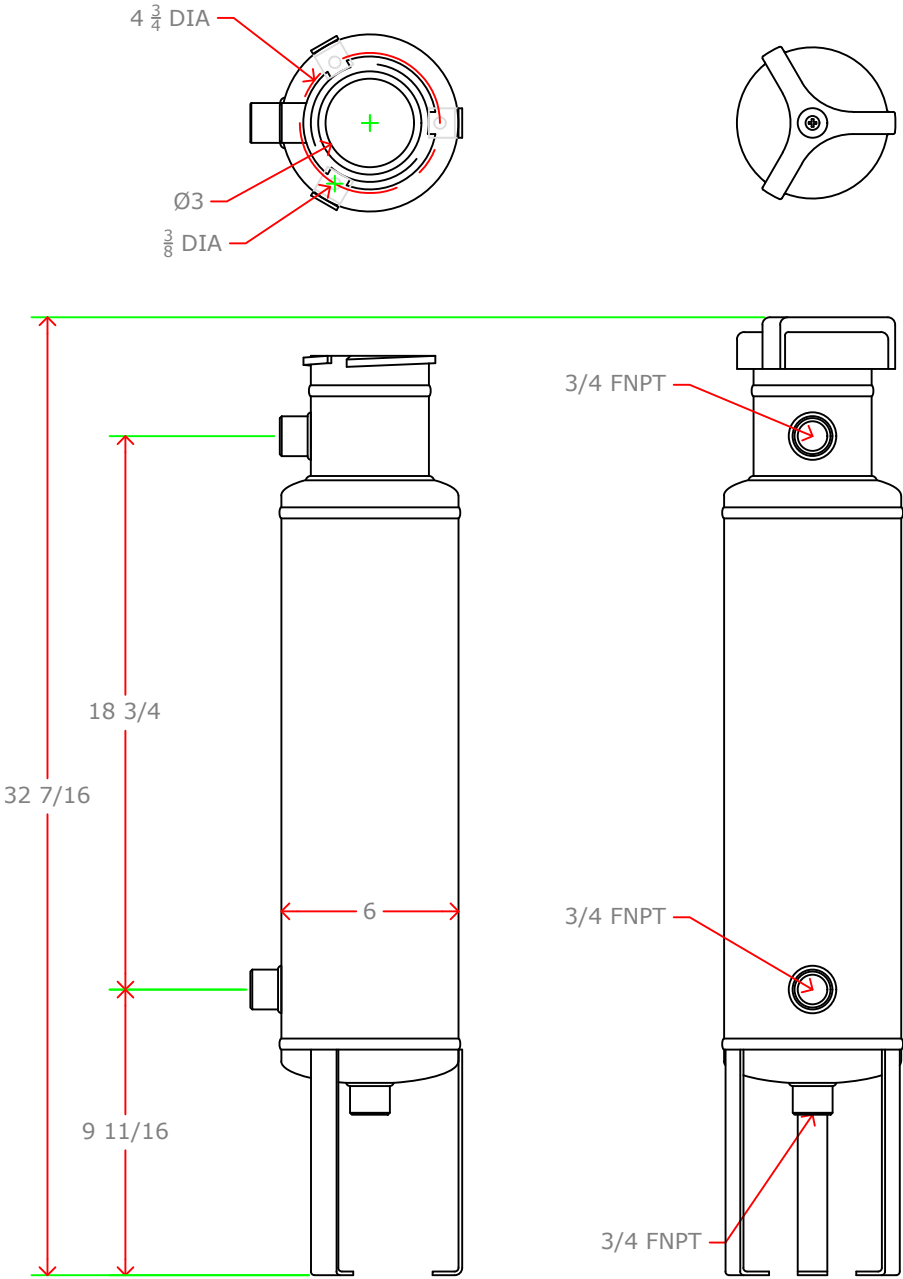


MATERIALS OF CONSTRUCTION:
CARBON STEEL

Capacity:	2	Gallons
Max Temp.:	200	F
Max Press.:	300	PSI
Weight:	22	Lbs.
Voltage.:	x	VAC x Phs x Hz
FLA.:	x	amps
AquaPhoenix Scientific, Inc. California Division 113 Viking Ave, Brea CA 92821 Phone: 714-257-9165 http://www.aquaphoenixsci.com Fax: 714-257-9215 info@aquaphoenixsci.com		
Date:	02/01/06	Scale: NTS Rev.: A
Description:	BYPASS/FILTER FEEDER	
Model:	DB2	

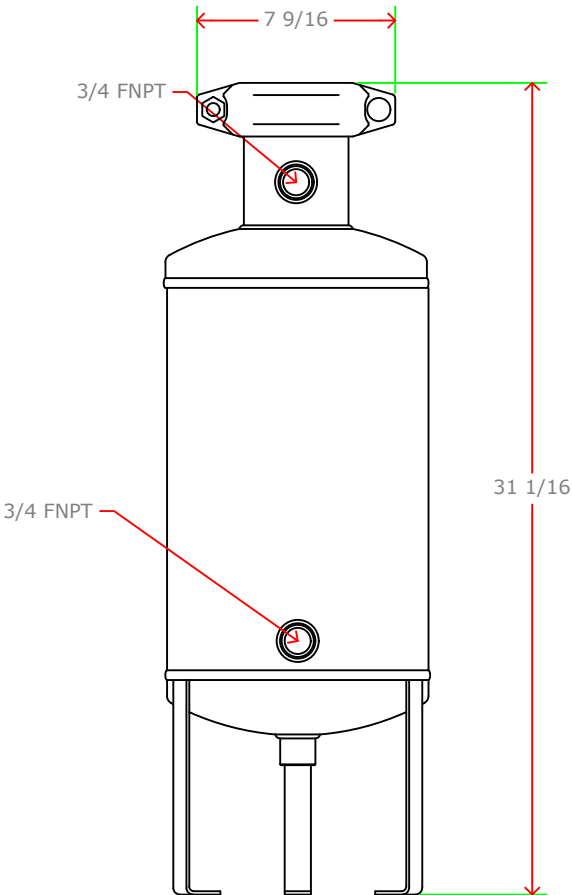
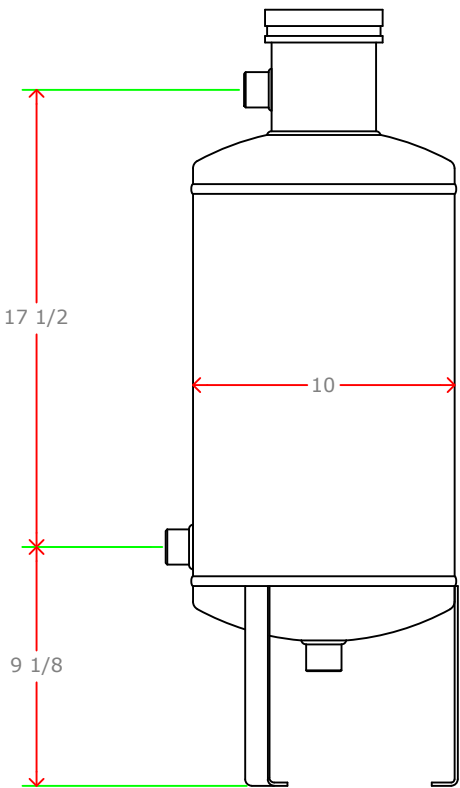
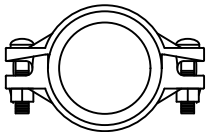
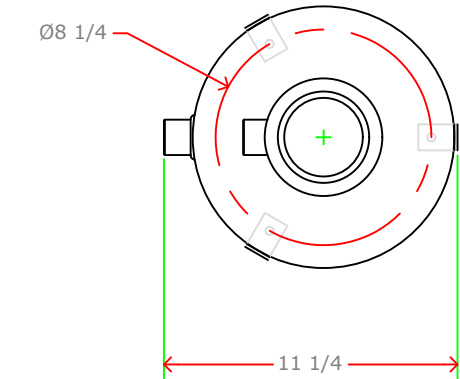
NOTICE: This drawing and it's contents are for the specific use of APS customers only. It is not to be duplicated or copied without expressed written consent. AquaPhoenix reserves the right to modify this drawing without notice.

NOTICE: This drawing and it's contents are for the specific use of APS customers only. It is not to be duplicated or copied without expressed written consent. AquaPhoenix reserves the right to modify this drawing without notice.



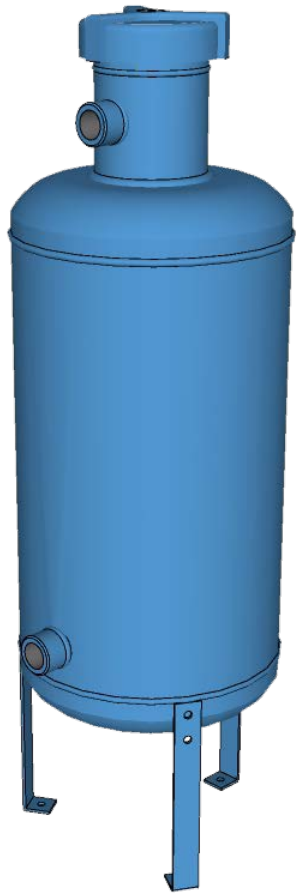
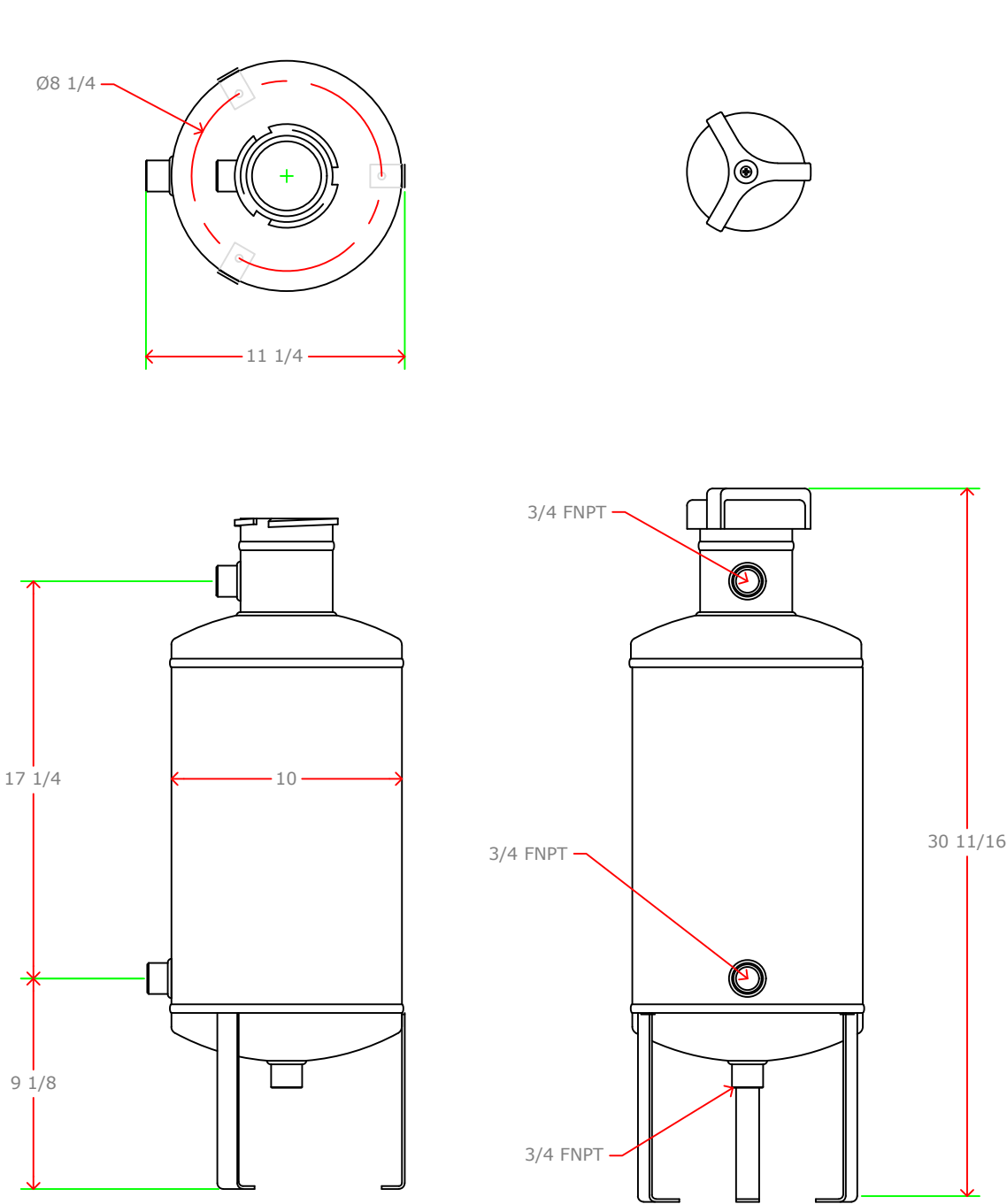
MATERIALS OF CONSTRUCTION:					
CARBON STEEL					
Capacity:	2	Gallons			
Max Temp.:	200	F			
Max Press.:	200	PSI			
Weight:	22	Lbs.			
Voltage.:	x	VAC	x	Phs	x Hz
FLA.:	x	amps			
AquaPhoenix Scientific, Inc. California Division					
113 Viking Ave, Brea CA 92821					
Phone: 714-257-9165		http://www.aquaphoenixsci.com			
Fax: 714-257-9215		info@aquaphoenixsci.com			
Date:	02/01/06	Scale:	NTS	Rev.:	A
Description:					
BYPASS/FILTER FEEDER					
Model:					
DB2/QC					

NOTICE: This drawing and it's contents are for the specific use of APS customers only. It is not to be duplicated or copied without expressed written consent. AquaPhoenix reserves the right to modify this drawing without notice.



MATERIALS OF CONSTRUCTION: CARBON STEEL			
Capacity:	5	Gallons	
Max Temp.:	200	F	
Max Press.:	300	PSI	
Weight:	36	Lbs.	
Voltage.:	x	VAC	x Phs x Hz
FLA.:	x	amps	
AquaPhoenix Scientific, Inc. California Division 113 Viking Ave, Brea CA 92821 Phone: 714-257-9165 http://www.aquaphoenixsci.com Fax: 714-257-9215 info@aquaphoenixsci.com			
Date:	02/01/06	Scale:	NTS Rev.: A
Description: BYPASS/FILTER FEEDER			
Model: DB5			

NOTICE: This drawing and it's contents are for the specific use of APS customers only. It is not to be duplicated or copied without expressed written consent. AquaPhoenix reserves the right to modify this drawing without notice.

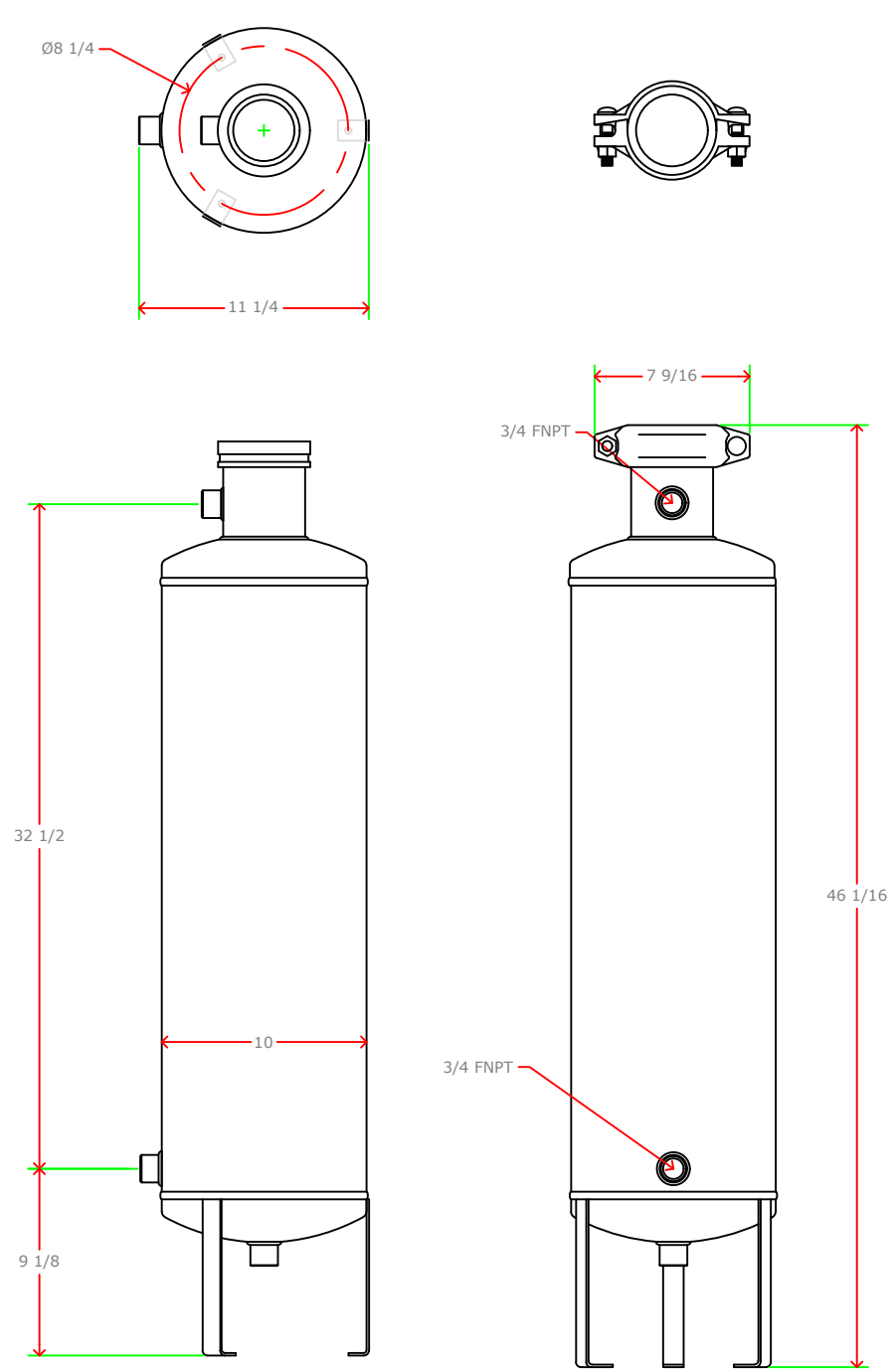


MATERIALS OF CONSTRUCTION:
CARBON STEEL

Capacity:	5	Gallons				
Max Temp.:	200	F				
Max Press.:	200	PSI				
Weight:	36	Lbs.				
Voltage.:	x	VAC	x	Phs	x	Hz
FLA.:	x	amps				
AquaPhoenix Scientific, Inc. California Division 113 Viking Ave, Brea CA 92821 Phone: 714-257-9165 http://www.aquaphoenixsci.com Fax: 714-257-9215 info@aquaphoenixsci.com						
Date:	02/01/06	Scale:	NTS	Rev.:	A	
Description:	BYPASS/FILTER FEEDER					
Model:	DB5/QC					

NOTICE: This drawing and it's contents are for the specific use of APS customers only. It is not to be duplicated or copied without expressed written consent. AquaPhoenix reserves the right to modify this drawing without notice.

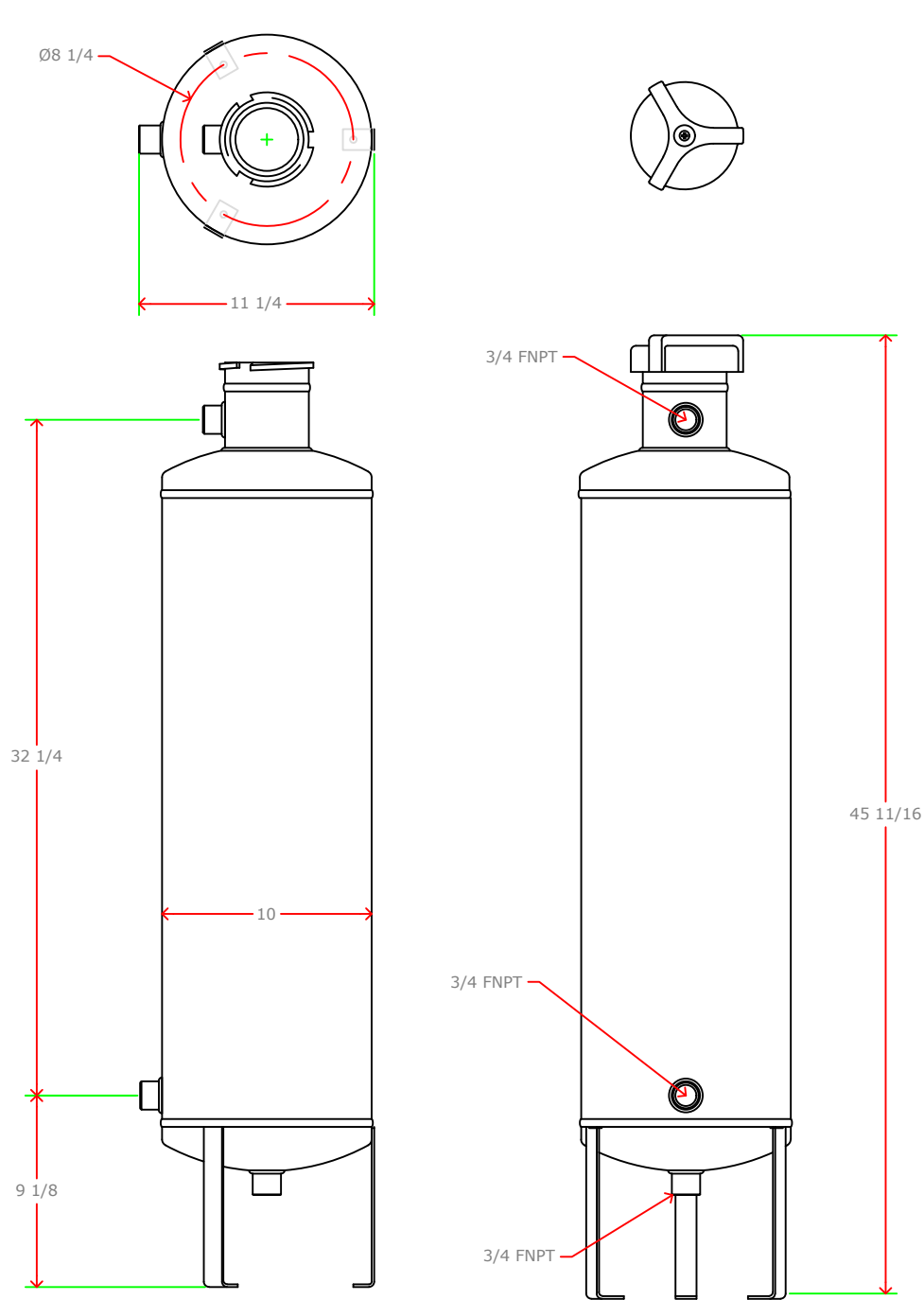
NOTICE: This drawing and it's contents are for the specific use of APS customers only. It is not to be duplicated or copied without expressed written consent. AquaPhoenix reserves the right to modify this drawing without notice.



MATERIALS OF CONSTRUCTION:									
CARBON STEEL, BUNA-N									
Capacity:	10	Gallons							
Max Temp.:	200	F							
Max Press.:	300	PSI							
Weight:	53	Lbs.							
Voltage.:	x	VAC	x	Phs	x	Hz			
FLA.:	x	amps							
AquaPhoenix Scientific, Inc. California Division									
113 Viking Ave, Brea CA 92821									
Phone: 714-257-9165				http://www.aquaphoenixsci.com					
Fax: 714-257-9215				info@aquaphoenixsci.com					
Date:	02/01/06	Scale:	NTS	Rev.:	A				
Description:									
BYPASS/FILTER FEEDER									
Model:									
DB10									

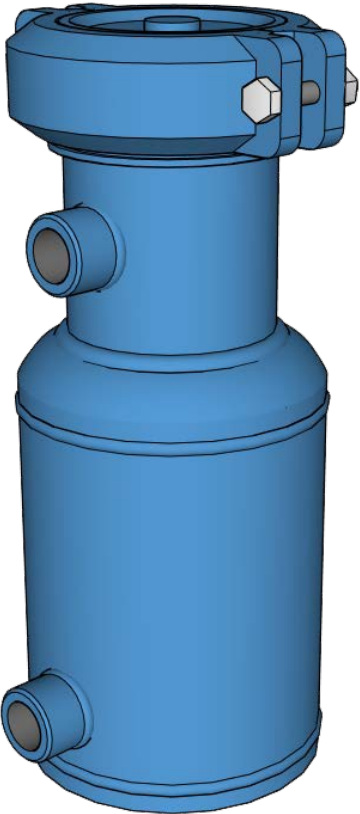
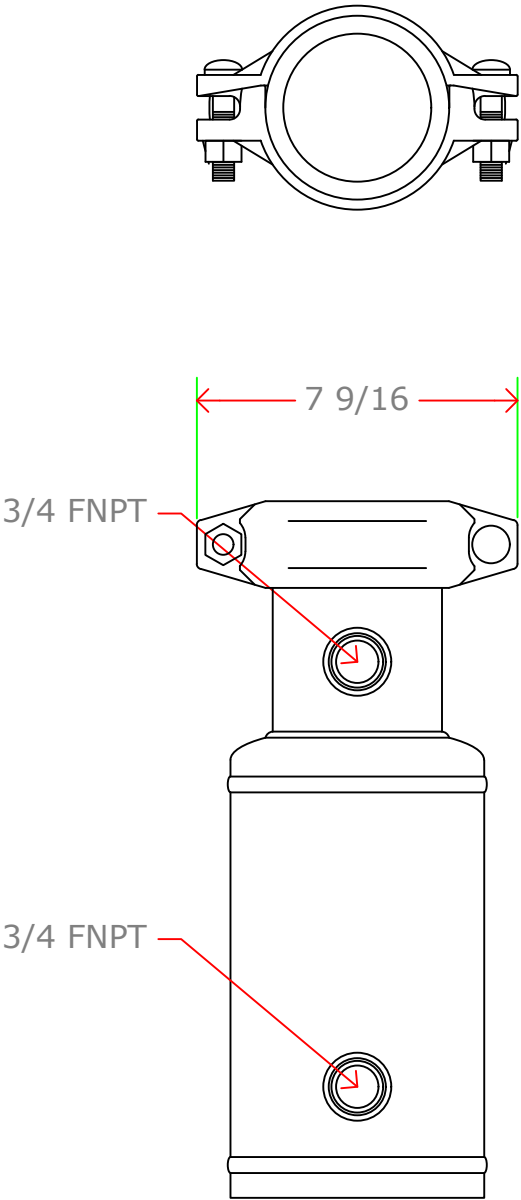
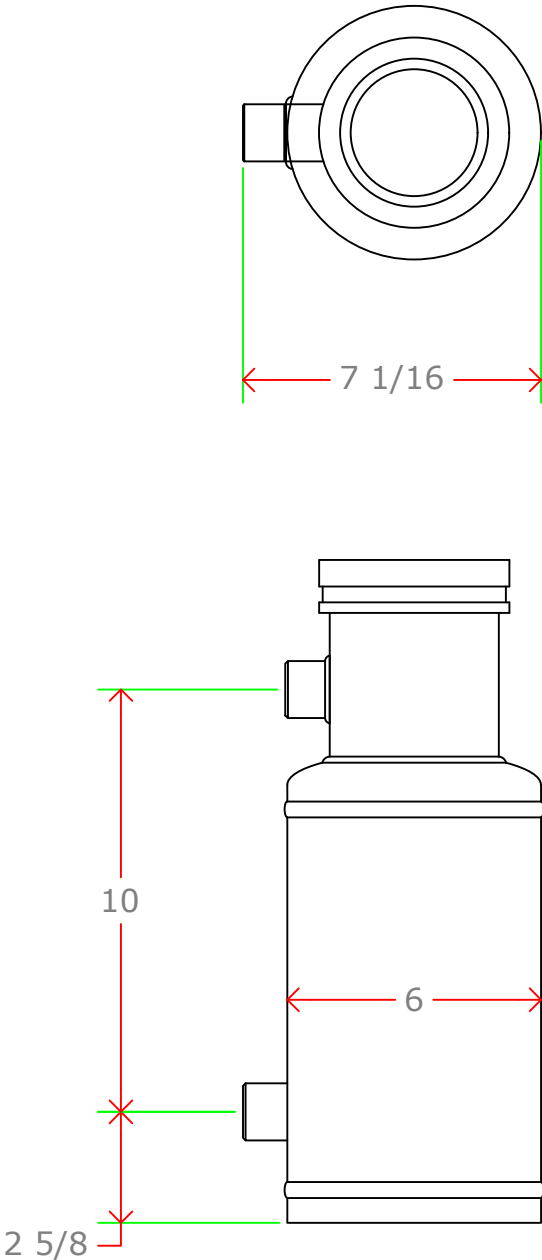
NOTICE: This drawing and it's contents are for the specific use of APS customers only. It is not to be duplicated or copied without expressed written consent. AquaPhoenix reserves the right to modify this drawing without notice.

NOTICE: This drawing and it's contents are for the specific use of APS customers only. It is not to be duplicated or copied without expressed written consent. AquaPhoenix reserves the right to modify this drawing without notice.

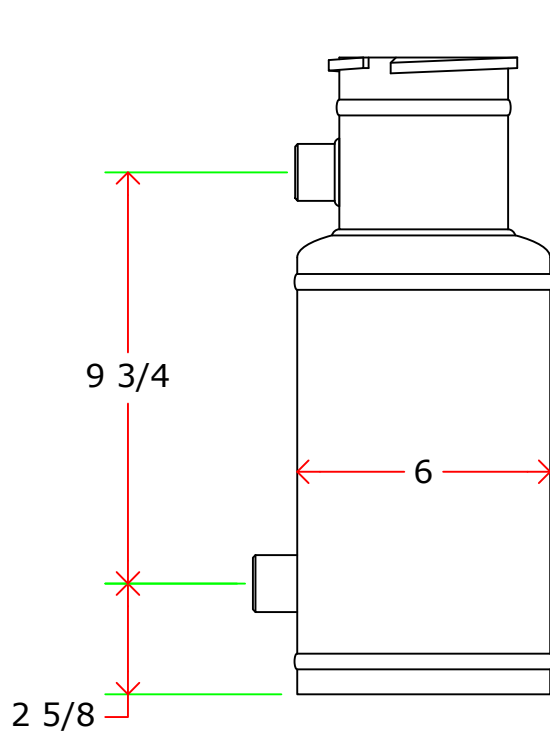
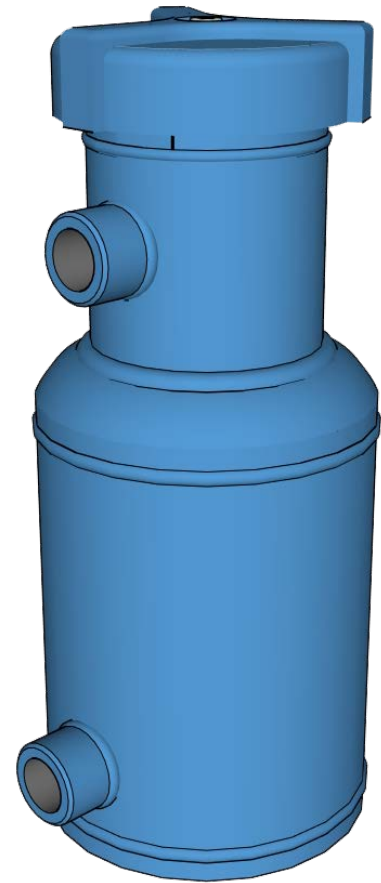
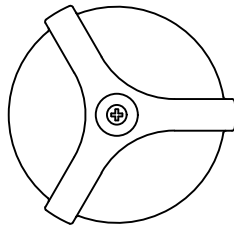
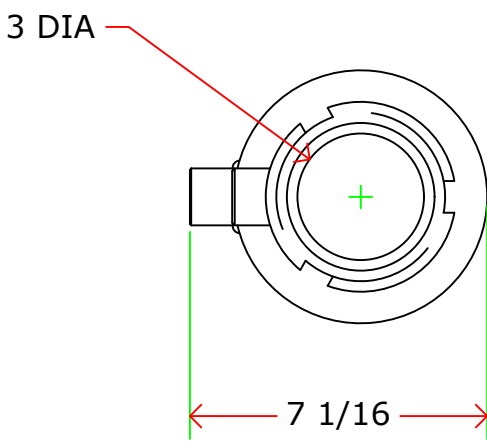


MATERIALS OF CONSTRUCTION: CARBON STEEL, BUNA-N, RYTON									
Capacity:	10	Gallons							
Max Temp.:	200	F							
Max Press.:	200	PSI							
Weight:	53	Lbs.							
Voltage.:	x	VAC	x	Phs	x	Hz			
FLA.:	x	amps							
AquaPhoenix Scientific, Inc. California Division 113 Viking Ave, Brea CA 92821 Phone: 714-257-9165 http://www.aquaphoenixsci.com Fax: 714-257-9215 info@aquaphoenixsci.com									
Date:	02/01/06	Scale:	NTS		Rev.:	A			
Description: BYPASS/FILTER FEEDER									
Model: DB10/QC									

NOTICE: This drawing and it's contents are for the specific use of APS customers only. It is not to be duplicated or copied without expressed written consent. AquaPhoenix reserves the right to modify this drawing without notice.

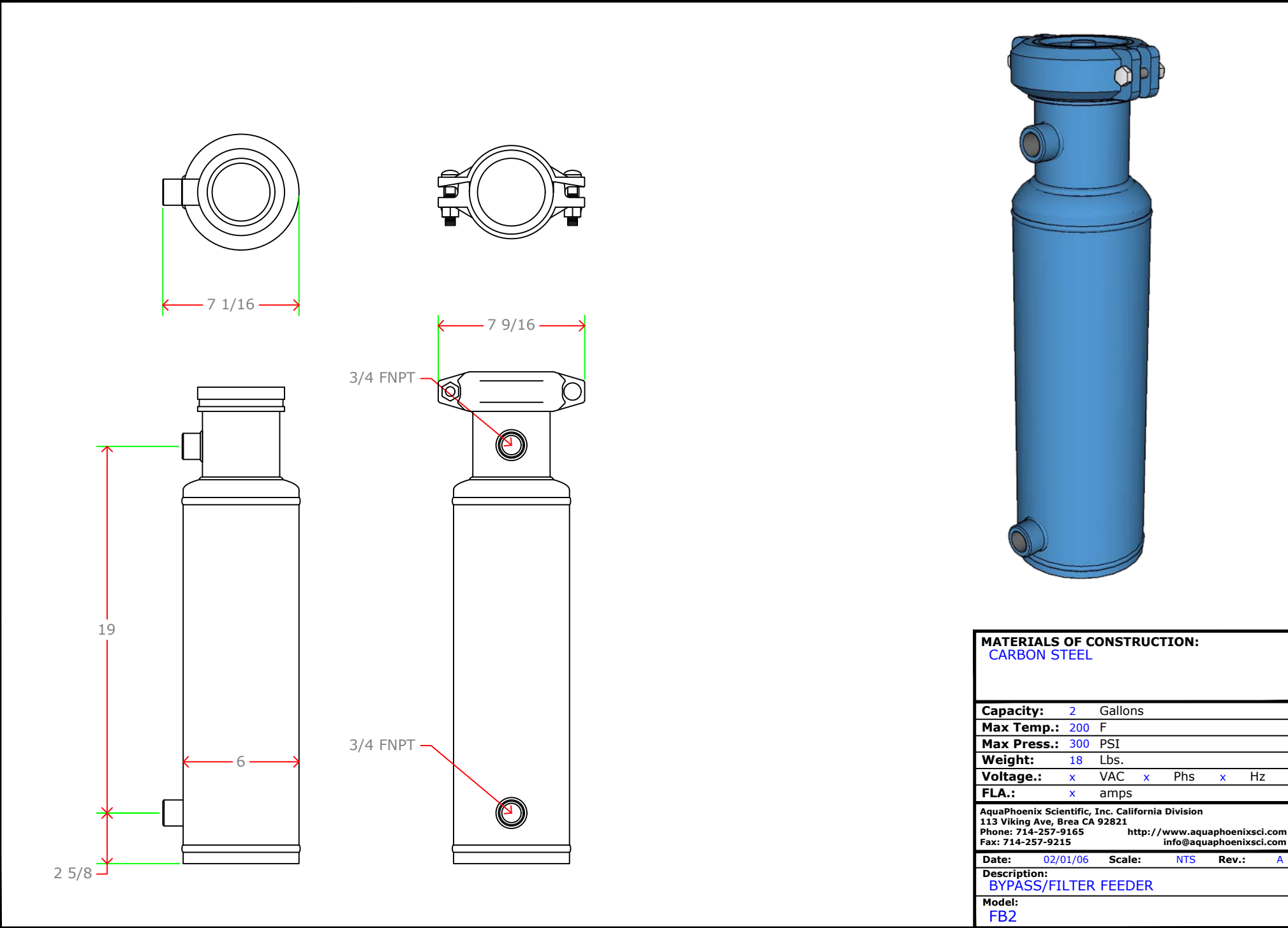


MATERIALS OF CONSTRUCTION:				
CARBON STEEL, BUNA-N				
Capacity:	1	Gallons		
Max Temp.:	200	F		
Max Press.:	300	PSI		
Weight:	16	Lbs.		
Voltage.:	x	VAC	x	Phs x Hz
FLA.:	x	amps		
AquaPhoenix Scientific, Inc. California Division 113 Viking Ave, Brea CA 92821 Phone: 714-257-9165 http://www.aquaphoenixsci.com Fax: 714-257-9215 info@aquaphoenixsci.com				
Date:	02/01/06	Scale:	NTS	Rev.: A
Description: BYPASS/FILTER FEEDER				
Model: FB1				



MATERIALS OF CONSTRUCTION: CARBON STEEL, BUNA-N, RYTON				
Capacity:	1	Gallons		
Max Temp.:	200	F		
Max Press.:	200	PSI		
Weight:	16	Lbs.		
Voltage.:	x	VAC	x	Phs
FLA.:	x	amps	x	Hz
AquaPhoenix Scientific, Inc. California Division 113 Viking Ave, Brea CA 92821 Phone: 714-257-9165 http://www.aquaphoenixsci.com Fax: 714-257-9215 info@aquaphoenixsci.com				
Date:	02/01/06	Scale:	NTS	Rev.: A
Description: BYPASS/FILTER FEEDER				
Model: FB1/QC				

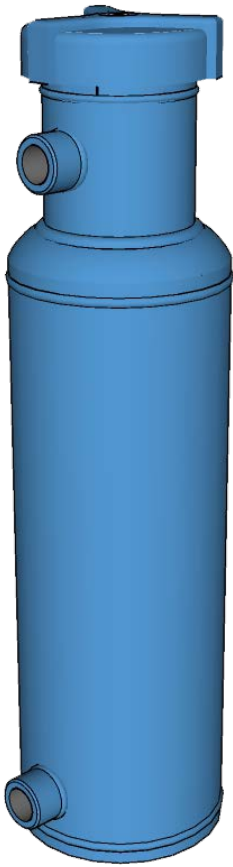
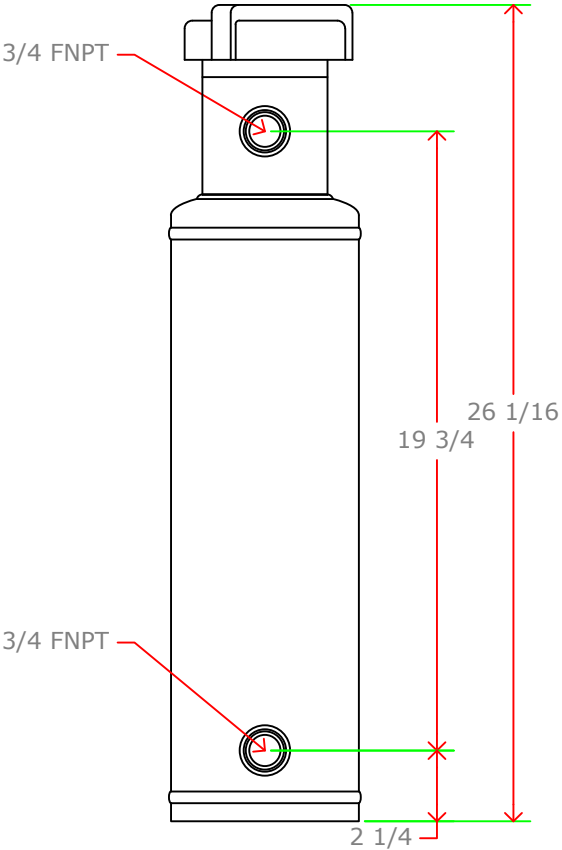
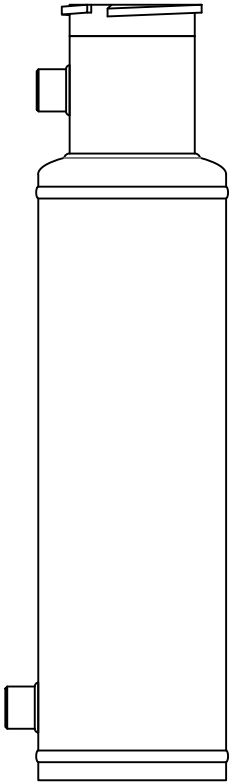
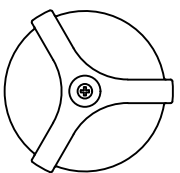
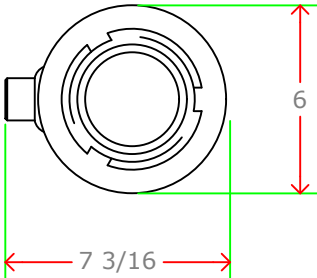
NOTICE: This drawing and it's contents are for the specific use of APS customers only. It is not to be duplicated or copied without expressed written consent. AquaPhoenix reserves the right to modify this drawing without notice.



MATERIALS OF CONSTRUCTION: CARBON STEEL									
Capacity:		2	Gallons						
Max Temp.:		200	F						
Max Press.:		300	PSI						
Weight:		18	Lbs.						
Voltage.:		x	VAC	x	Phs	x	Hz		
FLA.:		x	amps						
AquaPhoenix Scientific, Inc. California Division 113 Viking Ave, Brea CA 92821 Phone: 714-257-9165 http://www.aquaphoenixsci.com Fax: 714-257-9215 info@aquaphoenixsci.com									
Date:		02/01/06	Scale:		NTS	Rev.:		A	
Description: BYPASS/FILTER FEEDER									
Model: FB2									

NOTICE: This drawing and it's contents are for the specific use of APS customers only. It is not to be duplicated or copied without expressed written consent. AquaPhoenix reserves the right to modify this drawing without notice.

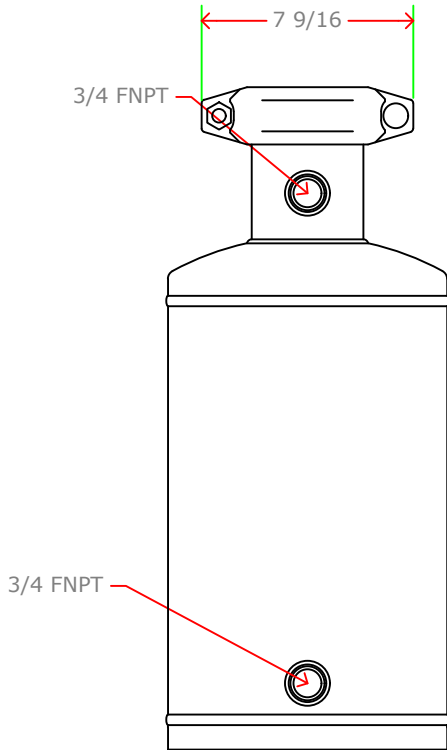
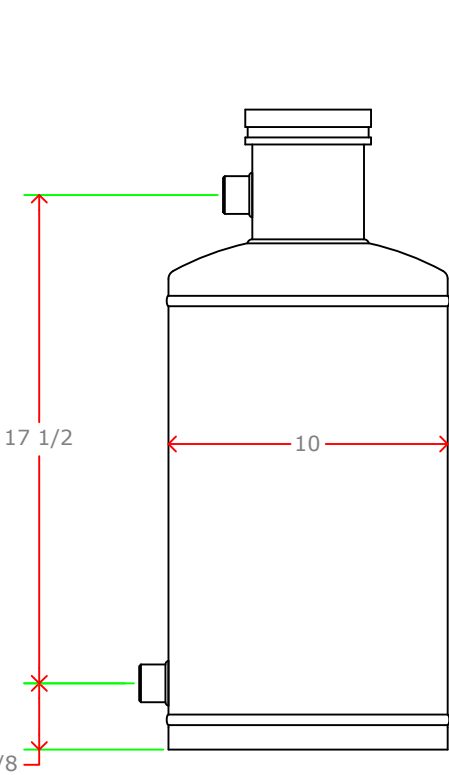
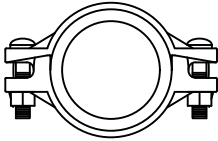
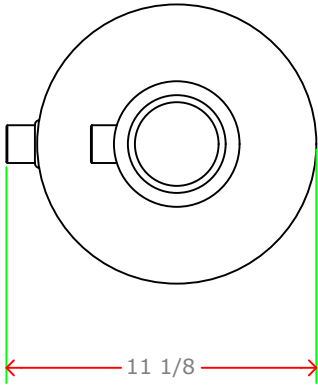
NOTICE: This drawing and it's contents are for the specific use of APS customers only. It is not to be duplicated or copied without expressed written consent. AquaPhoenix reserves the right to modify this drawing without notice.



MATERIALS OF CONSTRUCTION: CARBON STEEL			
Capacity:	2	Gallons	
Max Temp.:	200	F	
Max Press.:	200	PSI	
Weight:	18	Lbs.	
Voltage.:	x	VAC	x Phs x Hz
FLA.:	x	amps	
AquaPhoenix Scientific, Inc. California Division 113 Viking Ave, Brea CA 92821 Phone: 714-257-9165 http://www.aquaphoenixsci.com Fax: 714-257-9215 info@aquaphoenixsci.com			
Date:	02/01/06	Scale:	NTS Rev.: A
Description: BYPASS/FILTER FEEDER			
Model: FB2/QC			

NOTICE: This drawing and it's contents are for the specific use of APS customers only. It is not to be duplicated or copied without expressed written consent. AquaPhoenix reserves the right to modify this drawing without notice.

NOTICE: This drawing and it's contents are for the specific use of APS customers only. It is not to be duplicated or copied without expressed written consent. AquaPhoenix reserves the right to modify this drawing without notice.



MATERIALS OF CONSTRUCTION:
CARBON STEEL

Capacity: 5 Gallons

Max Temp.: 200 F

Max Press.: 300 PSI

Weight: 32 Lbs.

Voltage.: x VAC x Phs x Hz

FLA.: x amps

AquaPhoenix Scientific, Inc. California Division
113 Viking Ave, Brea CA 92821
Phone: 714-257-9165 <http://www.aquaphoenixsci.com>
Fax: 714-257-9215 info@aquaphoenixsci.com

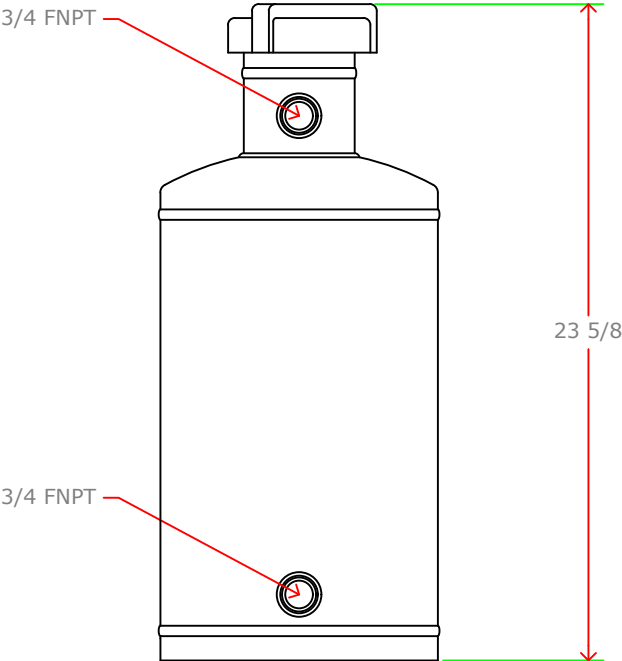
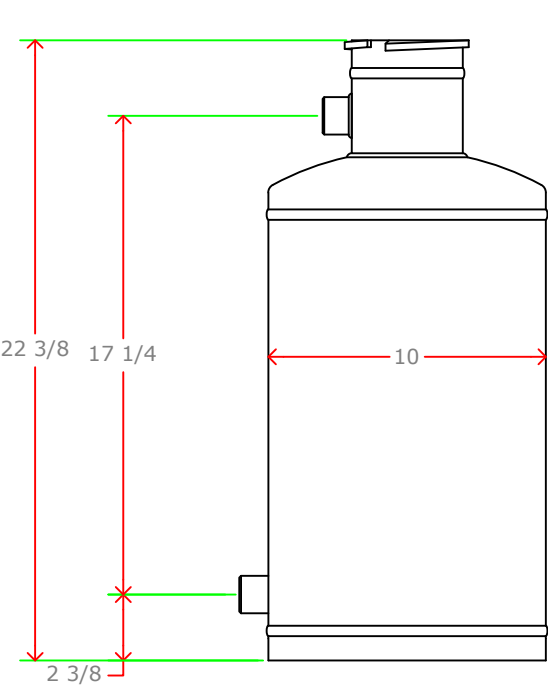
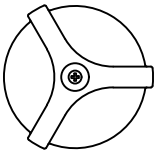
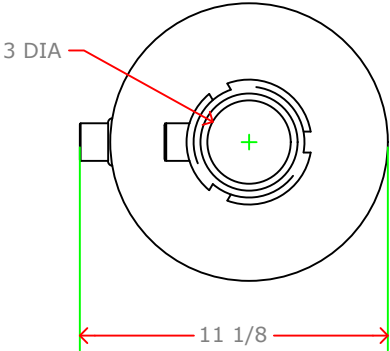
Date: 02/01/06 **Scale:** NTS **Rev.:** A

Description:
BYPASS/FILTER FEEDER

Model:
FB5

NOTICE: This drawing and it's contents are for the specific use of APS customers only. It is not to be duplicated or copied without expressed written consent. AquaPhoenix reserves the right to modify this drawing without notice.

NOTICE: This drawing and it's contents are for the specific use of APS customers only. It is not to be duplicated or copied without expressed written consent. AquaPhoenix reserves the right to modify this drawing without notice.

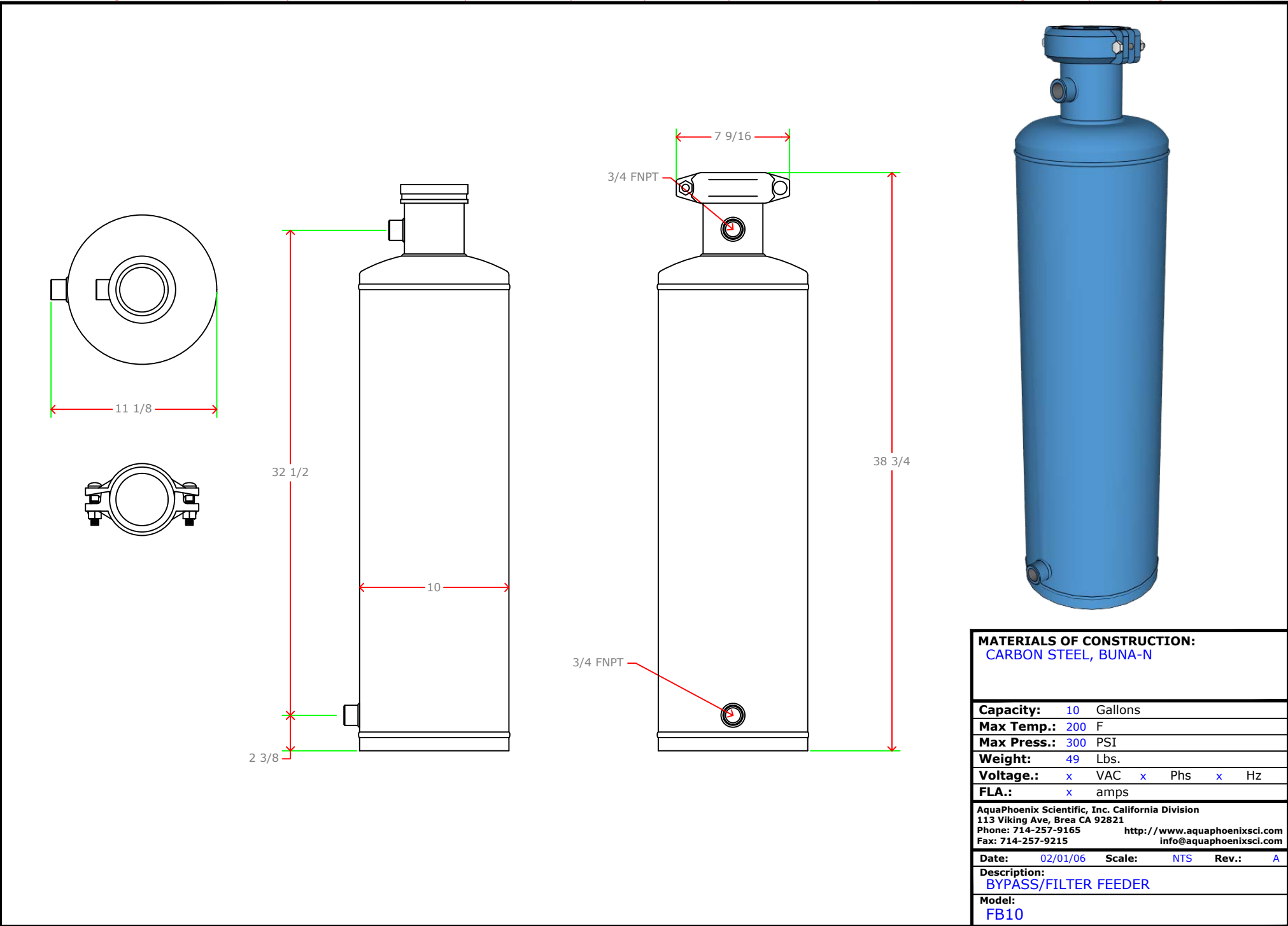


MATERIALS OF CONSTRUCTION:
CARBON STEEL

Capacity:	5	Gallons
Max Temp.:	200	F
Max Press.:	200	PSI
Weight:	32	Lbs.
Voltage.:	x	VAC x Phs x Hz
FLA.:	x	amps
AquaPhoenix Scientific, Inc. California Division 113 Viking Ave, Brea CA 92821 Phone: 714-257-9165 http://www.aquaphoenixsci.com Fax: 714-257-9215 info@aquaphoenixsci.com		
Date:	02/01/06	Scale: NTS Rev.: A
Description:	BYPASS/FILTER FEEDER	
Model:	FB5/QC	

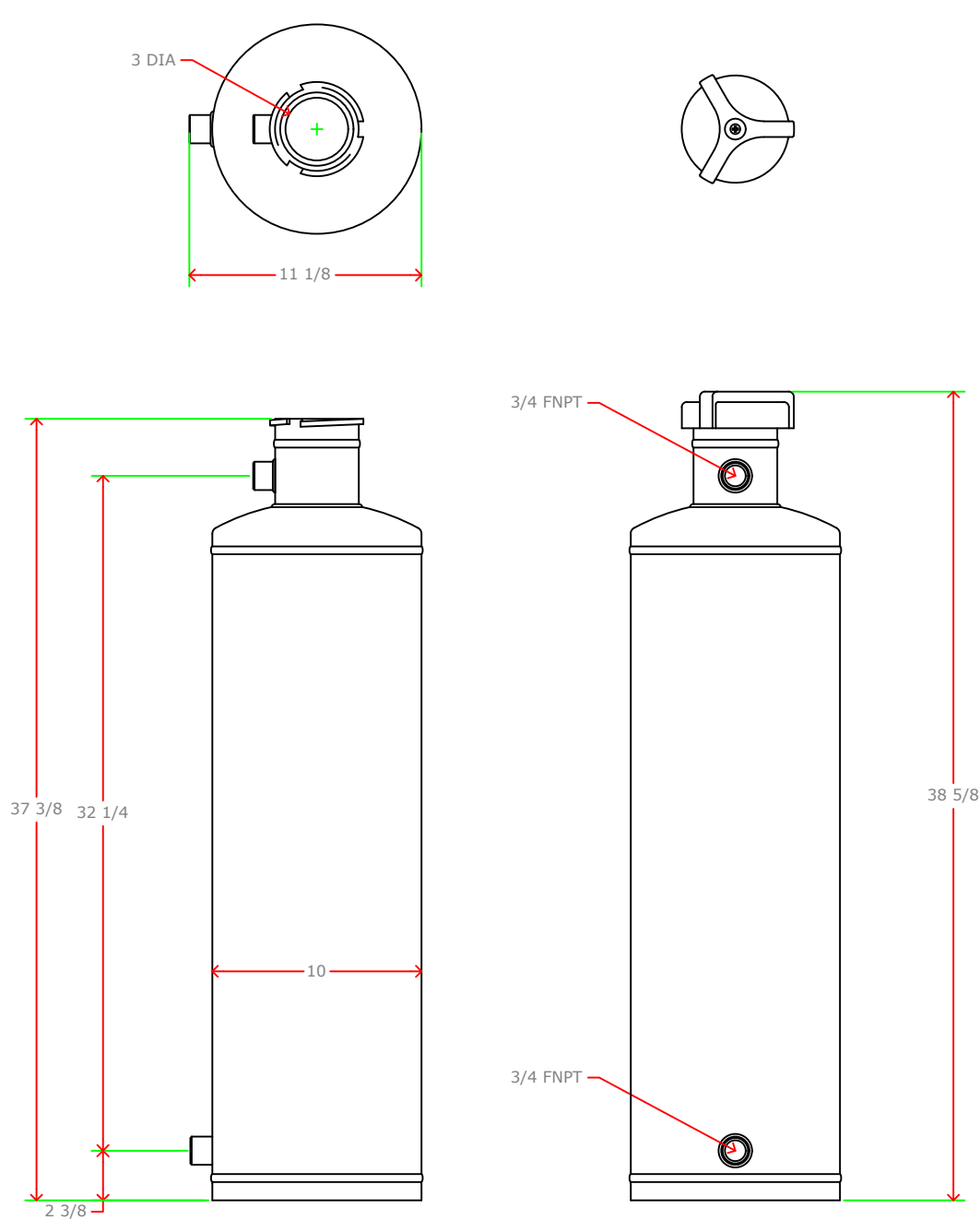
NOTICE: This drawing and it's contents are for the specific use of APS customers only. It is not to be duplicated or copied without expressed written consent. AquaPhoenix reserves the right to modify this drawing without notice.

NOTICE: This drawing and it's contents are for the specific use of APS customers only. It is not to be duplicated or copied without expressed written consent. AquaPhoenix reserves the right to modify this drawing without notice.



NOTICE: This drawing and it's contents are for the specific use of APS customers only. It is not to be duplicated or copied without expressed written consent. AquaPhoenix reserves the right to modify this drawing without notice.

NOTICE: This drawing and it's contents are for the specific use of APS customers only. It is not to be duplicated or copied without expressed written consent. AquaPhoenix reserves the right to modify this drawing without notice.



MATERIALS OF CONSTRUCTION: CARBON STEEL, BUNA-N, RYTON				
Capacity:	10	Gallons		
Max Temp.:	200	F		
Max Press.:	200	PSI		
Weight:	49	Lbs.		
Voltage.:	x	VAC	x	Phs
			x	Hz
FLA.:	x	amps		
AquaPhoenix Scientific, Inc. California Division 113 Viking Ave, Brea CA 92821 Phone: 714-257-9165 http://www.aquaphoenixsci.com Fax: 714-257-9215 info@aquaphoenixsci.com				
Date:	02/01/06	Scale:	NTS	Rev.: A
Description: BYPASS/FILTER FEEDER				
Model: FB10/QC				

NOTICE: This drawing and it's contents are for the specific use of APS customers only. It is not to be duplicated or copied without expressed written consent. AquaPhoenix reserves the right to modify this drawing without notice.