

# Acidity Test Kit

1 drop = 0.004% / 5 mL

# TK1001-Z

red caps

## KIT COMPONENTS:

SH6200-B	Sodium Hydroxide 0.1N, 60 mL
PH1605-A	Phenolphthalein Indicator, 30 mL
SY-2010-P	Syringe, 10 mL
VL-0525-V	Vial, 5-25 mL

## SAFETY TIPS:



Wear  
Gloves



Use Eye  
Protection



Read  
SDS

## TESTING TIPS:



Collect  
Accurate  
Sample



Hold  
Bottles  
Vertically



Ensure  
Proper  
Lighting

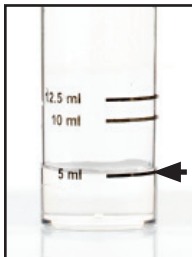
**INTERFERENCES:** Turbid or highly colored samples may mask the color change at the endpoint.

**ATTENTION:** As necessary, calibrate this kit against a known standard made with plant / make-up water. Be sure to collect a representative sample.

Video Procedure

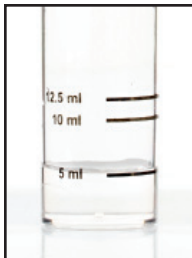


**1** Rinse vial three times with sample to be tested. **Fill vial to 5 mL.**



STEP 1

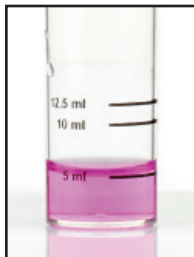
**2** Add 3 drops of **Phenolphthalein Indicator (PH1605)** and swirl to mix. The sample should remain colorless.



STEP 2

**3** Add **Sodium Hydroxide 0.1N (SH6200)** one drop at a time while swirling. Count the number of drops until the sample color changes from colorless to pink.

# drops x 0.004 = % as Phosphoric Acid



STEP 3

# Acidity Test Kit

1 drop = 0.002% / 10 mL

# TK1001-Z

red caps

## KIT COMPONENTS:

SH6200-B	Sodium Hydroxide 0.1N, 60 mL
PH1605-A	Phenolphthalein Indicator, 30 mL
SY-2010-P	Syringe, 10 mL
VL-0525-V	Vial, 5-25 mL

## SAFETY TIPS:



Wear  
Gloves



Use Eye  
Protection



Read  
SDS

## TESTING TIPS:



Collect  
Accurate  
Sample



Hold  
Bottles  
Vertically



Ensure  
Proper  
Lighting

**INTERFERENCES:** Turbid or highly colored samples may mask the color change at the endpoint.

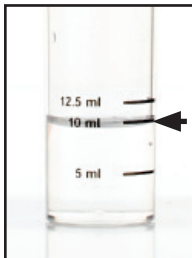
**ATTENTION:** As necessary, calibrate this kit against a known standard made with plant / make-up water. Be sure to collect a representative sample.



Video Procedure

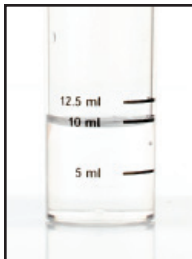


**1** Rinse vial three times with sample to be tested. **Fill vial to 10 mL.**



STEP 1

**2** Add 3 drops of **Phenolphthalein Indicator** (PH1605) and swirl to mix. The sample should remain colorless.



STEP 2

**3** Add **Sodium Hydroxide 0.1N** (SH6200) one drop at a time while swirling. Count the number of drops until the sample color changes from colorless to pink.

# drops x 0.002 = % as Phosphoric Acid



STEP 3