

Acidity Test Kit

1 drop = 10, 20 or 40 ppm

TK1029-Z

red caps

KIT COMPONENTS:

SH6200-B	Sodium Hydroxide 0.1N, 60 mL
PH1605-A	Phenolphthalein Indicator, 30 mL
SY-2005-P	Syringe, 5 mL
VL-0525-V	Vial, 5-25 mL

SAFETY TIPS:



Wear
Gloves



Use Eye
Protection



Read
SDS

TESTING TIPS:



Collect
Accurate
Sample



Hold
Bottles
Vertically



Ensure
Proper
Lighting

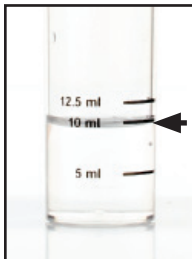
INTERFERENCES: Turbid or highly colored samples may mask the color change at the endpoint.

ATTENTION: As necessary, calibrate this kit against a known standard made with plant / make-up water. Be sure to collect a representative sample.

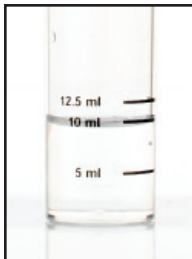
1 Rinse vial three times with sample to be tested. **Select a sample size** based on the desired drop equivalency and place into the vial.

1 drop = 10 ppm	20 mL sample
1 drop = 20 ppm	10 mL sample
1 drop = 40 ppm	5 mL sample

2 Add **2 to 3 drops of Phenolphthalein Indicator (PH1605)** and swirl to mix. The sample should remain colorless.



STEP 1



STEP 2

3 Add **Sodium Hydroxide 0.1N (SH6200)** one drop at a time while swirling. Count the number of drops until the sample color turns pink. Multiply the number of drops by the chosen equivalence factor and express as CaCO_3 .



STEP 3