

# Phenol Red pH Test Kit

pH 6.8 – 8.2 (0.2 increments)

**TK9954-Z**  
white caps

## KIT COMPONENTS:

PH2510-B	Phenol Red Indicator 0.04%, 60 mL
0106	Test Tube, square, w/cap
2185-01	Phenol Red Octa-Slide 2 Bar
1101	Octa-Slide Viewer

## SAFETY TIPS:



Wear  
Gloves



Use Eye  
Protection



Read  
SDS

## TESTING TIPS:



Collect  
Accurate  
Sample



Hold  
Bottles  
Vertically



Ensure  
Proper  
Lighting

**INTERFERENCES:** Turbid or highly colored samples may mask the color change at the endpoint.

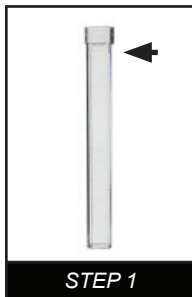
**ATTENTION:** As necessary, calibrate this kit against a known standard made with plant / make-up water. Be sure to collect a representative sample.

## USE OF THE OCTA-SLIDE 2 VIEWER

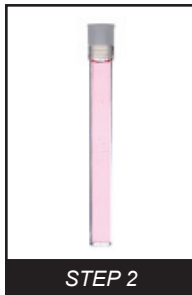
The Octa-Slide 2 Viewer should be held so non-direct light enters through the back of the Viewer. Insert the reacted sample into the top of the Viewer. Slide the Octa-Slide 2 Bar into the Viewer and match the color of the reaction to the color standards.



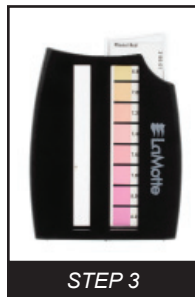
**1** Rinse test tube three times with sample to be tested. **Fill test tube to the 10 mL line.**



**2** Add 8 drops of **Phenol Red Indicator** (PH2510). Cap and mix.



**3** Insert **Phenol Red Octa-Slide 2 bar** (2185-01) into the Octa-Slide 2 Viewer (1101).



**4** Insert **test tube** into Octa-Slide 2 Viewer.

**Match the color** of the test tube to the color standard. Record as pH units.

